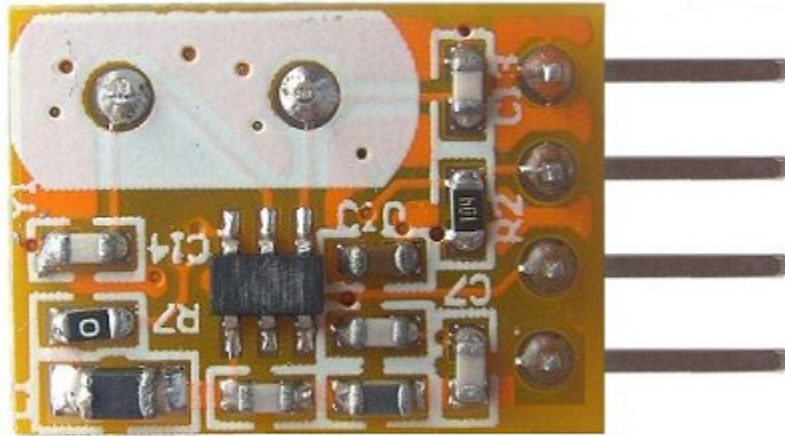


ASK radio transmitter module

RCT02STX5 ASK radio transmitter module is a superior performance transmitter module for ISM band. With the adoption of European brand RF wireless data transferring/receiver chipsets, it has advantage at strong transmission power, low voltage power supplying, easily through the Fcc/CE authentication. It can do wireless signal input to the data signal output without any external circuit. Users only need to decode the data plus a simple circuit and then any wireless products development can be easily achieved.



Features:

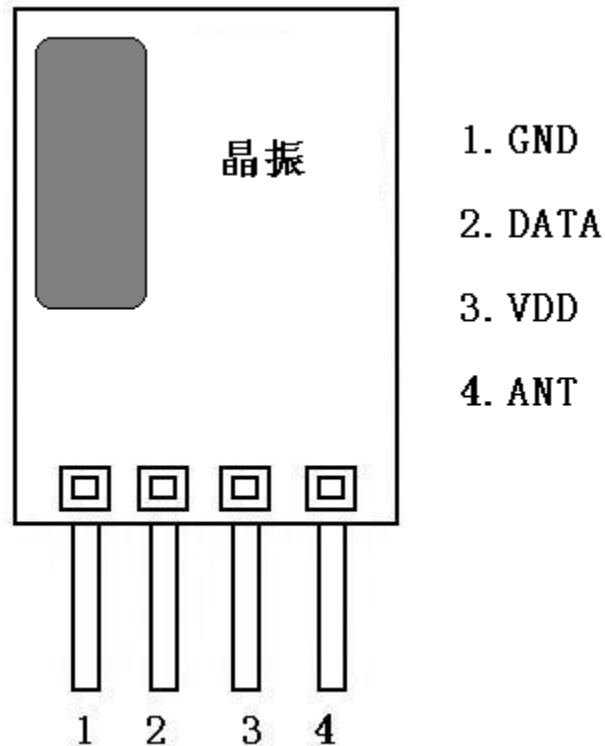
- (1) Bigger transmit power, more than 10mW;
- (2) Wide operation voltage range: 1.8 V-3.6V;
- (3) Operation frequency: 315 MHz;433 MHz;
- (4) Adoption of SAW steady frequency (+-50KHZ),
- (5) in cooperation with RXB8 receiving module, the operative distance can be 500m;
- (6) Lower static current and transmission consumption is about 10mA, nearly no current consumption if no data transferring.
- (7) Operation temperature range: -20℃~+60℃;

- (8) Dimension: 11x16x5.5MM;
- (9) Frequency stability: ± 50 KHZ
- (10) Modulation rate: 3KB/S
- (11) Input signal: TTL level

Applications:

- (1) Remote keyless entry (RKE) ;
- (2) Remote door-open machine, barrier gate
- (3) Wireless security alarm;
- (4) Remote control curtains;
- (5) Wireless industrial controller;
- (6) Wireless data transmission;

Product Pin Description



Electrical parameters:

Pin	Name	Function Explanation
1	GND	Power Ground
2	DATA	Data Input
3	VDD	Positive Power Supply
4	ANT	Antenna Input

VDD-GDN 1.8V-3.6V TA-25°

Parameters	Symbol	Status	Reference Value			Unit
			Minimum	Typical	Maximum	
Operation frequency	Fc		315		433.92	MHz
Modulation			ASK			
Transmission power		3V/50 Ω		10dBm		dBm
Modulation frequency				2.4K		Hz
Frequency accuracy	Fc			±50K		Hz
power consumption	IRC				10	mA
Operation voltage	VCC		1.8		3.6	V
Operation temperature range	TC		-40		+85	°C

Module Name explanation:

RCT02STX5. Represents the meaning of
transmission

315M. Represents the frequency
is 315MHz module

Module dimension drawing

